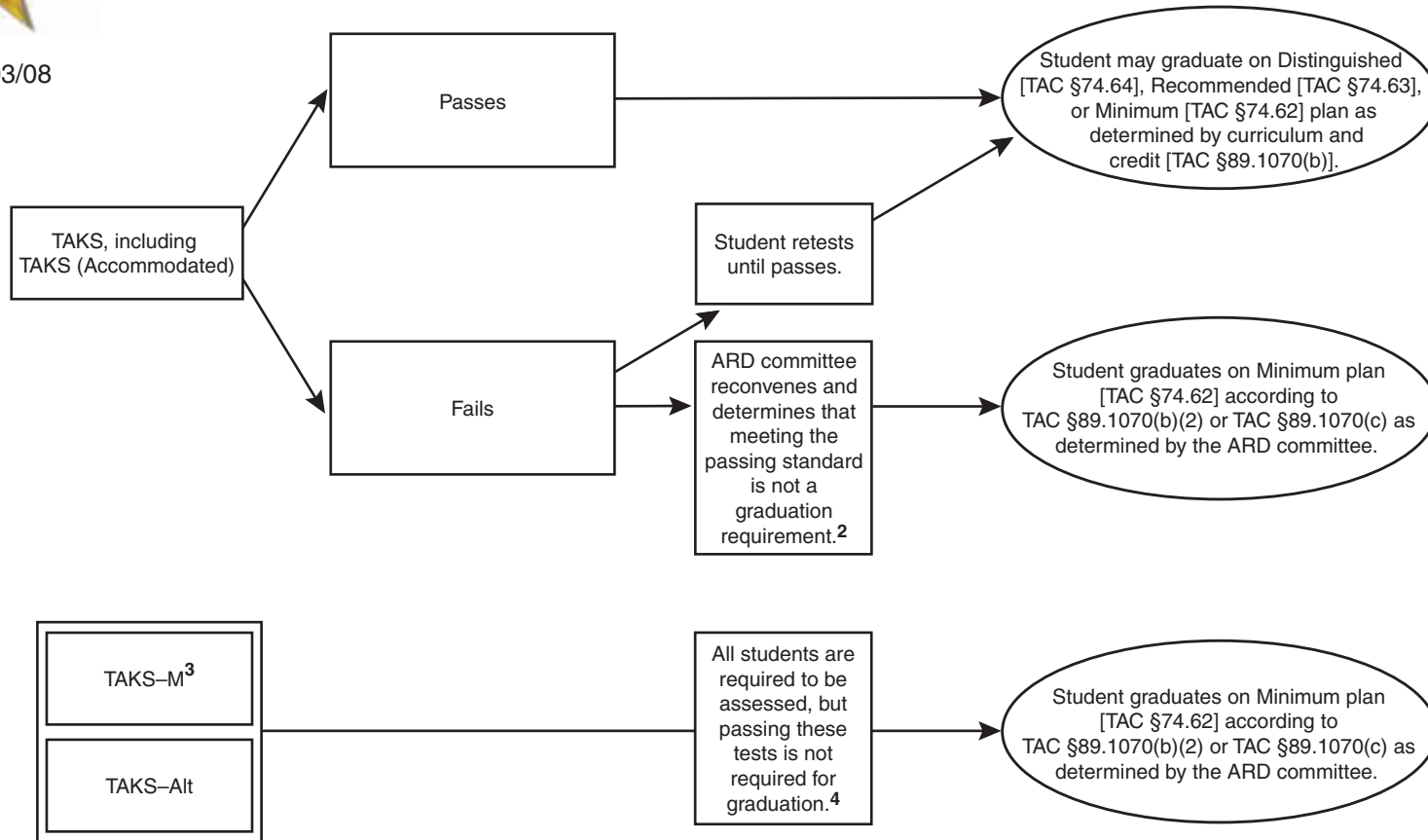




Posted 12/03/08

Flowchart A Guidelines for ARD Committees Regarding Testing Requirements for Students Entering Grade 9 in 2008–2009 (and thereafter)¹



¹ In November 2007, new Commissioner's Rules regarding exit level assessments were established. Students who enter grade 9 during the 2008–2009 school year (and thereafter) must meet the requirements of the new rule, TAC § 89.1070(b)(1).

² Simply failing the test is not sufficient reason to justify changing the IEP to reflect no graduation requirement/no retests.

³ Students who take at least one TAKS–M subject-area test in grade 11 graduate on the Minimum plan.

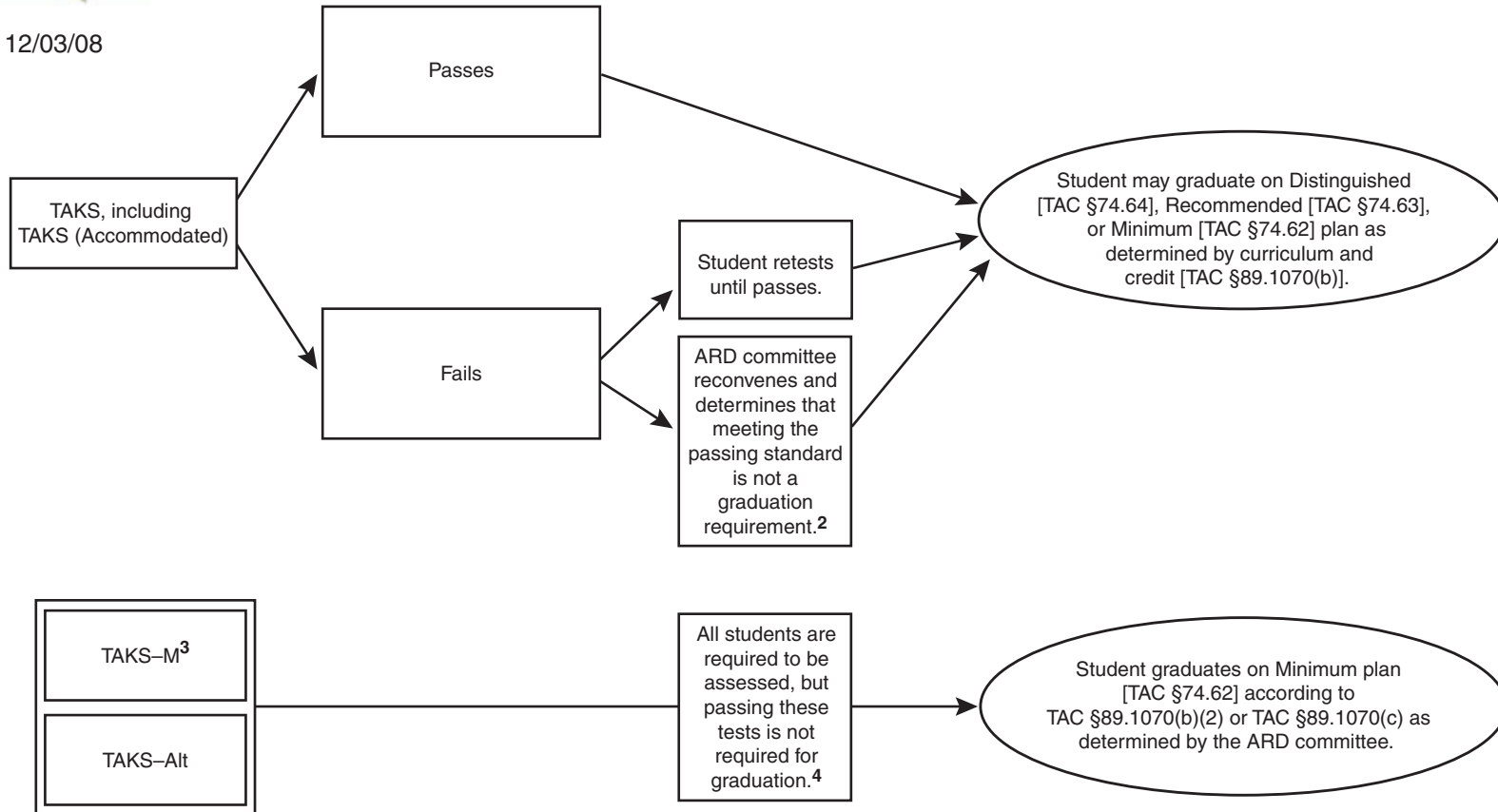
⁴ Retest opportunities are not available.

Additional information is available at <http://www.tea.state.tx.us/special.ed/guidance/rules/89.1070.html>.



Flowchart B Guidelines for ARD Committees Regarding Testing Requirements for Students Entering Grade 10, 11, or 12 in 2008–2009¹

Posted 12/03/08



¹ In November 2007, new Commissioner's Rules regarding exit level assessments were established. Students who began completing the Distinguished or Recommended high school program requirements prior to November 2007 are not affected by the rule change.

² Simply failing the test is not sufficient reason to justify changing the IEP to reflect no graduation requirement/no retests.

³ Students who take at least one TAKS–M subject-area test in grade 11 graduate on the Minimum plan.

⁴ Retest opportunities are not available.